



Type here your title, Arial 16, centered, Bold or simply replace this  
text by text

Author<sup>1,\*</sup>, Author<sup>2</sup> <full given name>, centered, Arial 12

<sup>1</sup> University name / institution / research study / company, Address, Country, italic, Arial 8 .

Received: \*\*\*\* \*, \*\*

Accepted: \*\*\*\* \*, \*\*

Published: \*\*\*\* \*, \*\*

Copyright © 2017 by author(s) and  
Scientific Research Publishing Inc.

Open Access

### Abstract

This paper receive research article, review article contain formatting instruction for preparing a paper for JAGI (Journal of Applied Geospatial Information) GeomaticsEngineering, Batam Polytechnic. This paper should be written in english or indonesia. On this paper, all word using Arial font. For Title case made with poin 16, words using Upper Case. Name of the author using 12 point, and Upper Case. University name using 7 point, and italic.

The word "Abstract" should put in left, bold, 9 point, paragraf space after 6 poin. Abstract should contain summary of the all research (aim, scope, result and conclusion) with maximum 250 words, justified, 9 point, and line spacing : single. For keywords wrote in italic and then separated using symbol (,) with maximum are 6 words. If you need assistance, please do not hesitate to contact JAGI editorial secretariat, or any further address you may have received for this purpose.

**Keywords:** Article, JAGI, Batam Polytechnic, Abstract

## 1. Introduction

### 1.1 Sub Introduction

This template, created in MS Word, provides authors with most of the formatting specifications needed for preparing electronic versions of their papers. All standard paper components have been specified for three reasons: 1) ease of use when formatting indi-vidual papers, 2) automatic compliance to electronic requirements that facilitate the concurrent or later production of electronic products, and 3) conformity of style throughout a journal paper. Margins, column widths, line spacing, and type styles are built-in; examples of the type styles are provided throughout this document and are identified in italic type, within parentheses, following the example. Some components, such as multi-leveled equations, graphics, and tables are not prescribed, although the various table text styles are provided. The formatter will need to create these compo-nents, incorporating the applicable criteria that follow. The book size will be in A4. Left margin 30mm, Right Margin 2mm, Top Margin 20mm and Bottom Margin: 20mm. Please make sure that you do not exceed th e indicated type area.

The structure of manuscripts should follow the following order; title, authors, affiliations, abstract, keywords, main text, (acknowledgement), (appendix), (nomenclature), references. The items with parentheses are not mandatory.

The maximum pages printed in JAGI are supposed to be 15 for an original paper and 18 for a review paper.

Do NOT include page numbers. Do NOT add Headers or Footers.

Prescribed font is Arial, 9 points, with an single line spacing.

However, if your text contains complicated mathematical expressions or chemical formulae, you may need to increase the line spacing. Running text should be justified.

## 2. Section headings

The way chapter titles and other headings are displayed in these instructions, is meant to be followed in your manuscript.

Level 1: Arial, 9, Bold, 6 pt spacing before heading, 6 pt spacing after heading.

Successive Levels: Times New Roman, 8, Bold, 6 pt spacing before heading, NO spacing below heading.

Do NOT begin a new section directly at the bottom of the page, but transfer the heading to the top of the next page.

Cite the main scientific publications on which your work is based. Cite only items that you have read. Do not inflate the manuscript with too many references.

Avoid excessive self-citations. Avoid excessive citations of publications from the same region. Check each reference against the original source (authors name, volume, issue, year, DOI Number). Please use Reference Manager Applications like EndNote, Mendeley, Zotero, etc. Use other published articles in the same journal as models.

If you are cite using mendeley please use **Elsevier Harvard (With Title)** for cite model stlye.

### 3. (Foot)notes

It is requested not to us any of footnotes. All references should be in the References. Explanations should be preferably included in the text.

### 4. Symbols and units, numbers

If symbols are defined in a nomenclature section, symbols and units should be listed in alphabetical order with their definition and dimensions in SI units.

Please use the SI set of units as much as possible. Wherever the application domain

uses a different set of units widely, please minimize the use of non-standard units or non-standard symbols for those units. As examples, the use of "a" for year (annum) is depreciated and the use of "y" is encouraged instead. Similarly, "h" should be used for hours instead of "hr" and "t" instead of "ton" or "tonne". It is important to take care of the case in which the measurement units are typed. E.g.

"Km" does not mean "kilometers", but "Kelvin-meters".

When providing numerical values followed by measurement units, please leave a regular space or non-breaking space between each value and the measurement unit. This also includes percentages and degrees Celsius (e.g. 42 % or 35 %, 234 °C, 504 K). This rule also applies to the unit for litre, which is recommended to be capital "L".

The authors are encouraged to render the numbers according to the International rules, specifying the dot as a decimal separator and the comma as a thousands separator.

### 5. Equations

Make sure that placing and numbering of equations is consistent throughout your manuscript.

(1)

$$\text{TVG} = -(\text{DB} - 30 \log_{10}(\text{range}) - 8.2 \times 10^{-4} \text{range})90/\text{DB} \quad (2)$$

Left align the equation and put the number of the equation flush-right, using a Right Tab on the right margin. Please reference equations in the text by writing: Eqn. .. (do not use Equation ..) In principle, variables are to be presented in italics.

$$b(\theta) = \frac{\langle P(\theta) \rangle}{\langle P(\theta = 0^\circ) \rangle} = \frac{\left( \frac{M_{p_{\max}}}{R} \right)^2 (1 + \cos \delta)}{\left( \frac{M_{p_{\max}}}{R} \right)^2 (1 + \cos 0^\circ)}$$

$$b(\theta) = \frac{\left( \frac{M_{p_{\max}}}{R} \right)^2 (1 + \cos(kd \sin \theta))}{2 \frac{(M_{p_{\max}})^2}{R}} = \frac{(1 + \cos(kd \sin \theta))}{2}$$

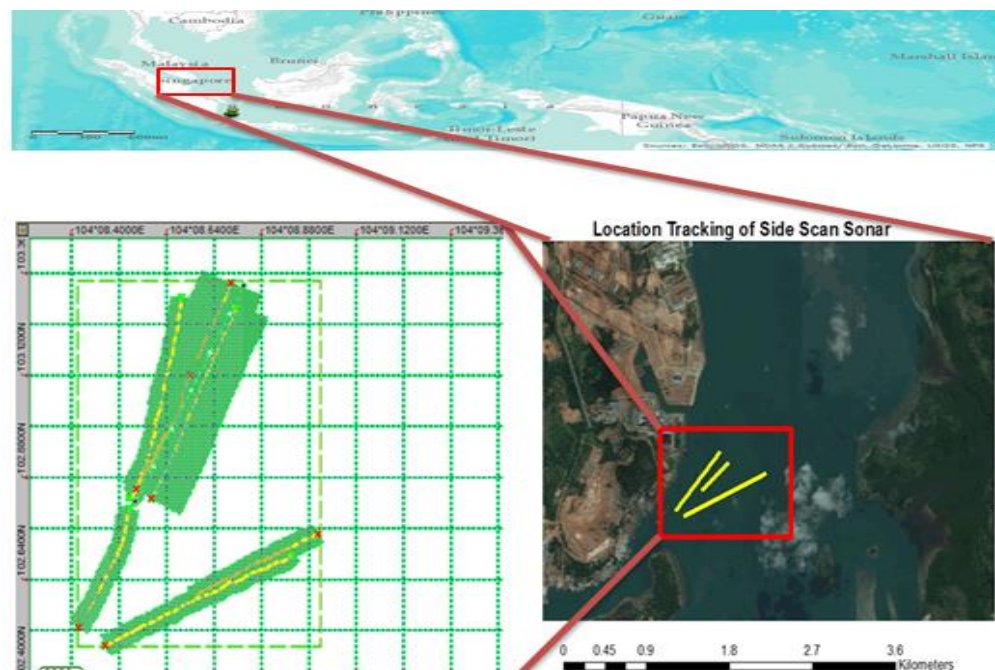


Fig. 1. Map of the study area

## 6. Figures and Tables

### 6.1 General

Positioning Figures and Tables: Place figures and tables at the top or bottom of columns. Avoid placing them in the middle of columns. Large figures and tables may span across both columns. Figure captions should be below the figures; table heads should appear above the tables. Insert figures and tables after they are cited in the text. Use "Figure 1" and "Table 1" in bold fonts, even at the beginning of a sentence. EPS (or PDF): Vector drawings, embed all used fonts.

TIFF (or JPEG): Color or grayscale photographs (halftones), keep to a minimum of 300 dpi.

TIFF (or JPEG): Bitmapped (pure black & white pixels) line drawings, keep to a minimum of 1000 dpi.

TIFF (or JPEG): Combinations bitmapped line/half-tone (color or grayscale), keep to a minimum of 500 dpi.

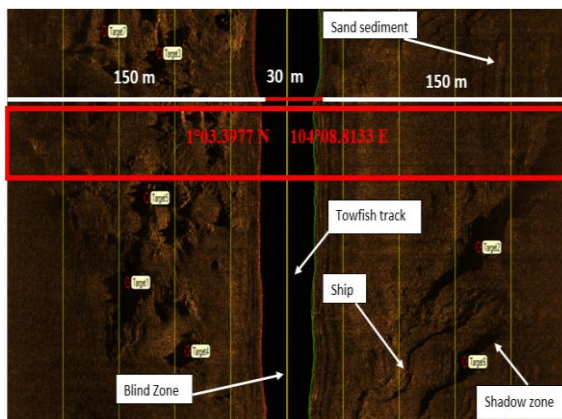


Fig 2. Image classification and position target 1- 5 on sediment track 3, Punggur sea

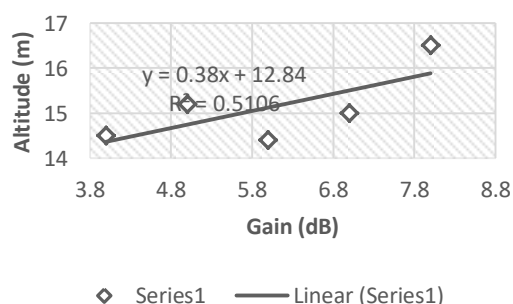


Fig 3. Linear regression of Gain (dB) with Altitude (m) on track 3, Punggur sea

### 6.2 Tables

Set table number and title flush left above table. Horizontal lines should be placed above and below table headings and at the bottom of the table. Vertical lines should be avoided. Title should use Arial 8, with 10 pt before and 4 pt after the paragraph, left justified at the top of the table.

Tables have to be included into the text. If a table is too long to fit one page, the table number and heading should be repeated on the next page before the table is continued. Alternatively the table may be spread over two consecutive pages (first an even numbered, then an odd-numbered page) turned by 90°, without repeating the heading.

Table 1. Table titles should be placed above the table and adjust text to table width.

heading 1	heading2	Heading3
Table size	can be	edited

a Remarks or references regarding fields or data in the table. Use and adjust text to table width.

b Remarks or references regarding fields or data in the table. Use and adjust text to table width.

## 7. Concerning references

References must be listed at the end of the paper. Do not begin them on a new page unless this is absolutely necessary. Authors should ensure that every reference in the text appears in the list of references and vice versa. Indicate references by (Lubis and Wenang, 2017), (Lubis *et al.*, 2017) or (Lubis and Manik, 2017), (Irawan, 2016). References must be with APA Style in Scholar.

Recommendations for references are:

### Book

Rothery, D.A., 2008. Geology. McGraw-Hill Companies, Blacklick, OH.

Or

Selley, R., Robin, L., Cocks, M., Plimer, I., 2005. Encyclopedia of Geology. Geology 3345. doi:10.1016/B0-12-369396-9/00102-7

### Magazine

Julio 2013 hailed as the best Geoscience event in Mideast., 2013. . Oil & Gas News.

### Journal

David, T.J.M., 2017. The Structure of Seismic . David B. Kitts. The Journal of Geology 86, 278–279.

### Thesis

Hestirianto, 2002. Precambrian basement geology and Paleozoic structure of the mid-continent gravity high. (thesis).

### Dissertation

Harman, D.A., 1946. The hydrology of the Frisian islands (dissertation).

### Report

Khairani, S., n.d. Tinjauan batupasir silika sebagai energi sumber daya alam terbarukan di daerah batam dan sekitarnya (rep.), Tinjauan batupasir silika sebagai energi sumber daya

alam terbaru di daerah batam dan sekitarnya

### Website

Petrology/Mineral Physics [WWW Document], n.d. [WWW Document]. JSG News RSS. URL [http://www.jsg.utexas.edu/research/disciplines/](http://www.jsg.utexas.edu/research/disciplines/petrology-mineral-physics/) petrology-mineral-physics/ (accessed 12.19.16).

When preparing your reference list, the following should be avoided:

- References not cited in the text.
- Excessively referencing your work.
- Insufficiently referencing the work of others.

Some examples of how your references should be listed are given at the end of this template in the 'References' section, which will allow you to assemble your reference list according to the correct format and font size.

When you are referencing conference proceedings, page numbers should be provided. If proceedings are not available, the lecture identification – e.g. lecture number should be provided instead.

When you are referencing websites, an author or authoring institution should be provided. The date of the last access should be provided as well.

The hyperlinks (blue colour and underlining) should be removed from email addresses and web references.

You do not need to repeat <http://> as modern browsers do not require it. However the date of the last access should be always provided. (Lubis *et al.*, 2015)

### Acknowledgements

Collate acknowledgements in a separate section at the end of the article before the references and do not, therefore, include them on title page, as a footnote to the title or otherwise. List here those individuals who provided help during the research (e.g., providing language help, or proof reading the article, etc.).

Acknowledgement can be write in this paper or not. Using 9 pt font, 6 pt after headings.

### References

Lubis, M. Z., & Anurogo, W. (2016). Fish stock estimation in Sikka Regency Waters, Indonesia using Single Beam Echosounder (CruzPro fish finder PcFF-80) with hydroacoustic survey method. *Aceh Journal of Animal Science*, 1(2), 70-78.

Lubis, M. Z., Anurogo, W., Khoirunnisa, H., Irawan, S., Gustin, O., & Roziqin, A. (2017). Using Side-Scan Sonar instrument to Characterize and map of seabed identification target in punggur sea of the Riau Islands, Indonesia.

*Journal of Geoscience, Engineering, Environment, and Technology*, 2(1), 1-8.

Lubis, M. Z., & Manik, H. M. (2017). Acoustic systems (split beam echo sounder) to determine abundance of fish in marine fisheries. *Journal of Geoscience, Engineering, Environment, and Technology*, 2(1), 76-83.

Irawan, S. (2016). Pemetaan Pasang Surut Dan Arus Laut Pulau Batam Dan Pengaruhnya Terhadap Jalur Transportasi Antarpulau. *Jurnal Kelautan: Indonesian Journal of Marine Science and Technology*, 9(1), 32-42.